

WGS 84 POSITIONS can be plotted directly on this chart

RIVER HUMBER OLD HARBOUR TO BARTON HAVEN

DEPTHS IN METRES
SCALE 1 : 10000

SURVEYED BY
Harbour Master, Humber
ASSOCIATED BRITISH PORTS
2nd and 3rd September 2019

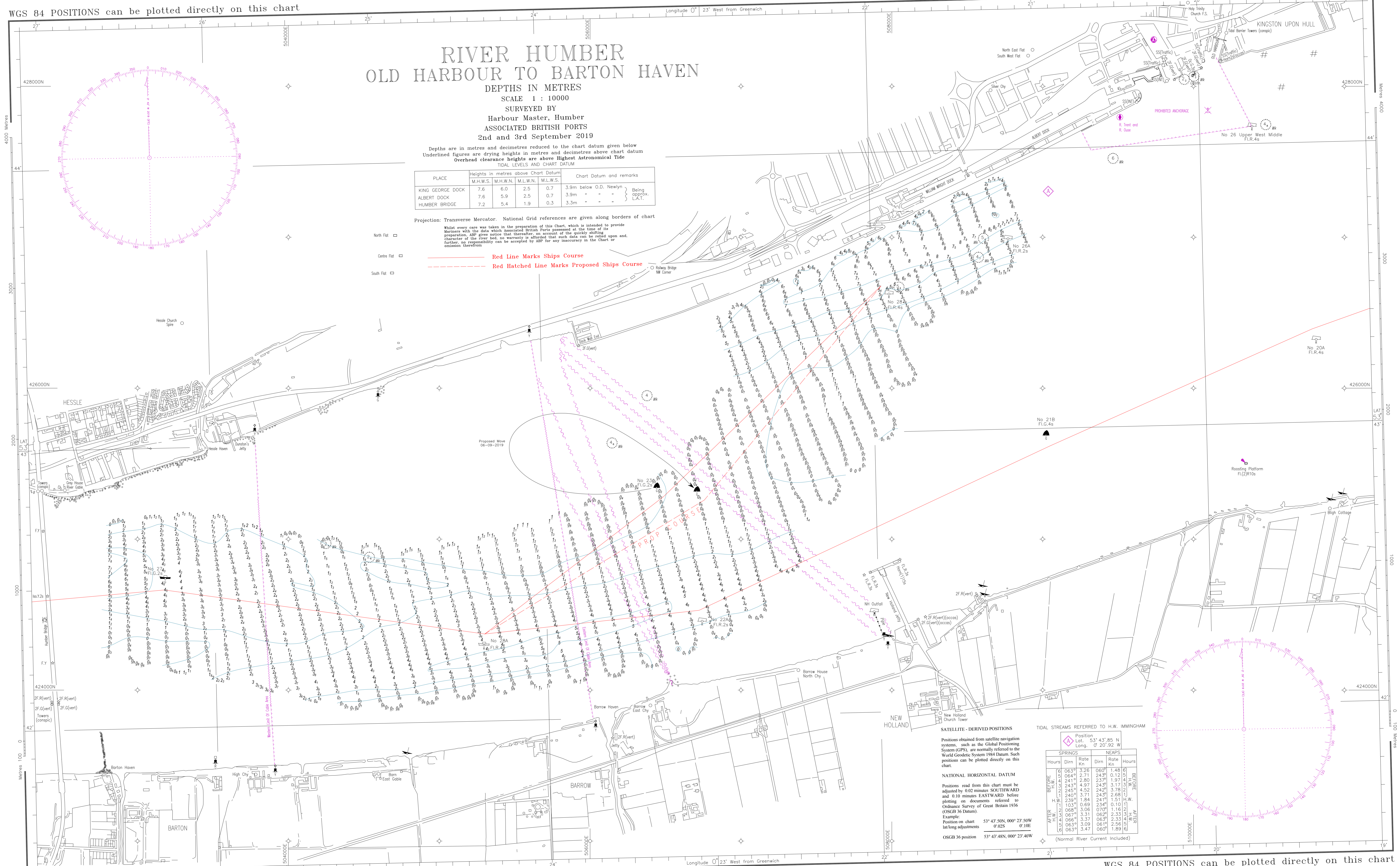
Depths are in metres and decimetres reduced to the chart datum given below
Underlined figures are drying heights in metres and decimetres above chart datum
Overhead clearance heights are above Highest Astronomical Tide

PLACE	Heights in metres above Chart Datum				Chart Datum and remarks
	M.H.W.S.	M.H.W.N.	M.L.W.N.	M.L.W.S.	
KING GEORGE DOCK	7.6	6.0	2.5	0.7	3.9m below O.D. Newlyn } Being approx. L.A.T.
ALBERT DOCK	7.6	5.9	2.5	0.7	3.9m - - -
HUMBER BRIDGE	7.2	5.4	1.9	0.3	3.3m - - -

Projection: Transverse Mercator. National Grid references are given along borders of chart

Whilst every care was taken in the preparation of this Chart, which is intended to provide Mariners with the data which Associated British Ports possessed at the time of its preparation, ABP gives notice that, thereafter, on account of the quickly shifting character of the river bed, no warranty is afforded that such data can be relied upon and, further, no responsibility can be accepted by ABP for any inaccuracy in the chart or omission therefrom

- North Flat □
- Centre Flat □
- South Flat □
- Red Line Marks Ships Course
- Red Hatched Line Marks Proposed Ships Course



SATELLITE-DERIVED POSITIONS

Positions obtained from satellite navigation systems, such as the Global Positioning System (GPS), are normally referred to the World Geodetic System 1984 Datum. Such positions can be plotted directly on this chart.

NATIONAL HORIZONTAL DATUM

Positions read from this chart must be adjusted by 0.02 minutes SOUTHWARD and 0.10 minutes EASTWARD before plotting on documents referred to Ordnance Survey of Great Britain 1936 (OSGB 36 Datum).
Example:
Position on chart 53° 43' 50N, 000° 23' 50W
lat/long adjustments 0° 02S 0° 10E
OSGB 36 position 53° 43' 48N, 000° 23' 40W

TIDAL STREAMS REFERRED TO H.W. IMMINGHAM

Hours	Dirn	Position Lat. 53° 43' 55 N Long. 0° 20' 52 W		Dirn	Rate Kn	Hours
		SPRINGS	NEAPS			
BEFORE H.W.	063	3.26	060	1.46	6	BEFORE H.W.
	064	2.71	243	0.12	5	
	241	2.80	237	1.97	4	
	242	4.97	243	3.17	3	
	243	4.52	247	3.78	2	
	240	3.71	243	2.68	1	
H.W.	239	1.94	241	1.51	0	H.W.
	103	0.69	234	0.10	1	
	088	3.06	070	1.16	2	
	069	3.31	066	2.33	3	
	066	3.37	063	2.56	4	
	063	3.09	061	2.26	5	
	063	3.47	060	1.89	6	AFTER H.W.

(Normal River Current Included)

WGS 84 POSITIONS can be plotted directly on this chart